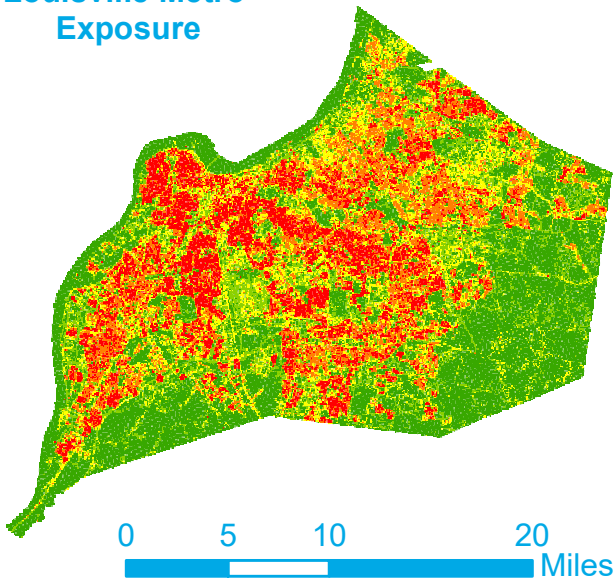
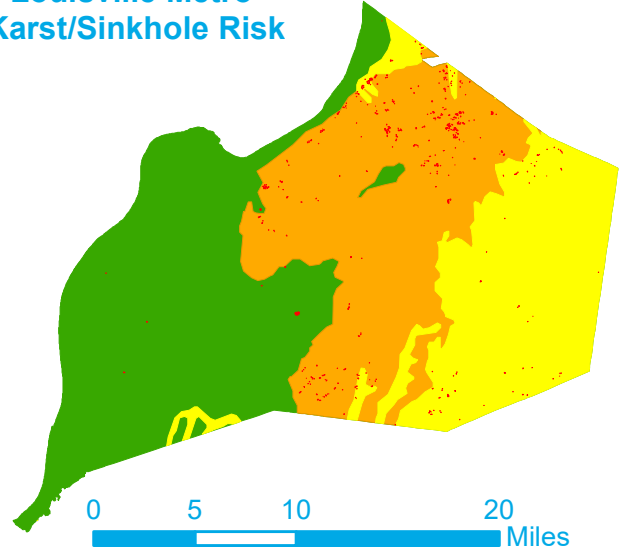


**Louisville Metro
Exposure**



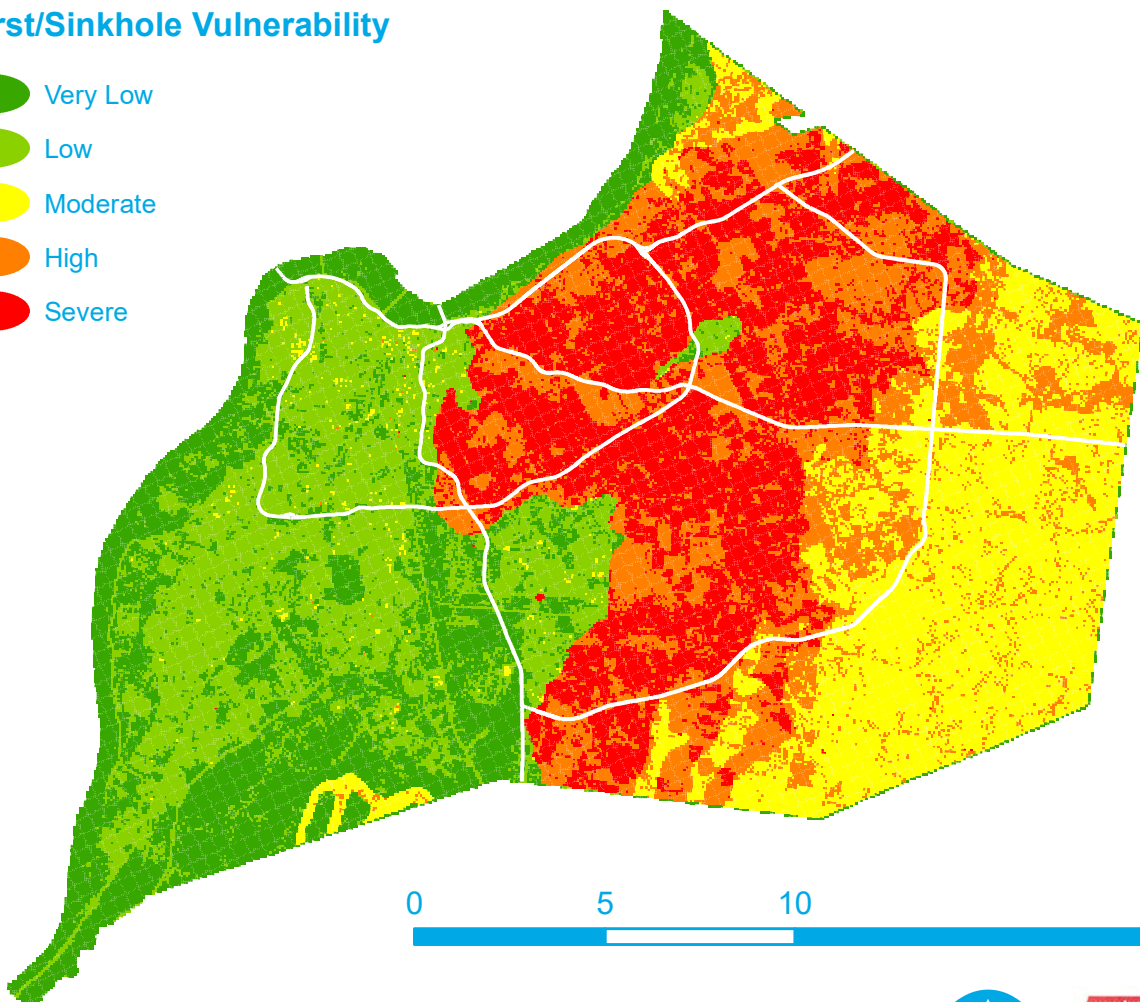
**Louisville Metro
Karst/Sinkhole Risk**



Louisville Metro

Karst/Sinkhole Vulnerability

- Very Low
- Low
- Moderate
- High
- Severe



Sources: LOJIC, Louisville MSD, US Census Bureau, Louisville EMA, Louisville Water Company, LG&E/KU, National Weather Service, Kentucky Geological Survey, Jefferson County PVA

