



PPL Electric Utilities

August 2020: Hershey Underground 69kV Power Line Project Update

We are writing with a construction update for the Hershey Underground 69 kilovolt (kV) power line project in your neighborhood. The underground line is replacing an aging overhead transmission line that is nearing the end of its useful life.

Our crews have been working on Elm Avenue and Sand Hill Road. We anticipate completing the work on Sand Hill Road that is north of Cherry Drive by the end of August. We will still have work remaining on Sand Hill south of Cherry Drive. We anticipate completing the work on Elm Avenue in September and moving to work on Governor Road/ Route 322.

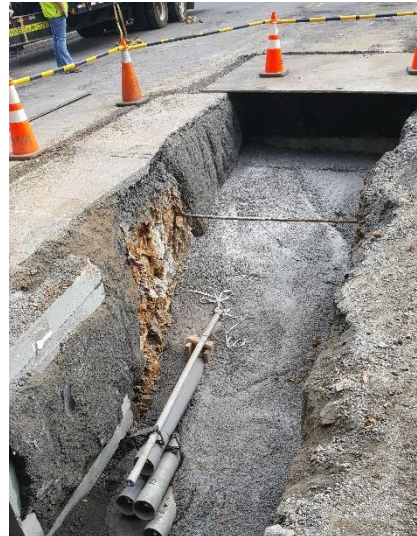
For the remaining work north of Cherry Drive on Sand Hill Road, we'll need to close Sand Hill Road 24/7, except for residents that live on Sand Hill Road, north of Cherry Drive, Peach Avenue and Apple Lane. We need to close this road because the remaining work will be completed down the center of Sand Hill Road, and it poses a safety hazard if a lot of traffic travels down this road.

Also, in August, our cable contractor, Prysmian, will prepare to start pulling and splicing cable. This process takes several months, so you can expect to see the contractors working in and near the manholes where construction was already completed.

Here's a look at some of the recent work:



Left: Elm Avenue redesigned duct bank.



Right: Elm Avenue excavation work.

For more information, please visit our project website at www.pplelectric.com/HersheyProject. You can also contact us through email at HersheyProject@pplweb.com or call Jonathan Scott at 817-975-7099.